

Vocal Parts (SATB)

Key: F

# Make You Known

2 Corinthians 4:1-6; Philippians 2:14-16

Words and Music by James Cheesman (ASCAP)

♩ = 102

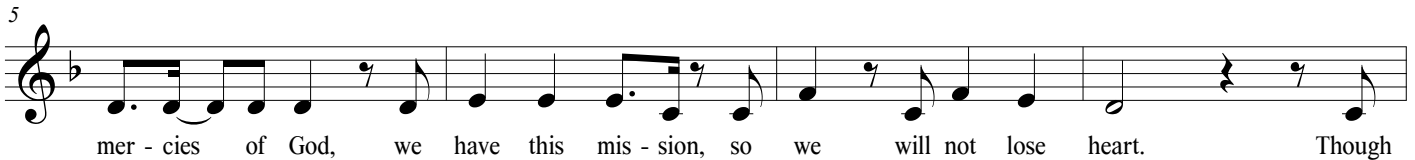
*mf*



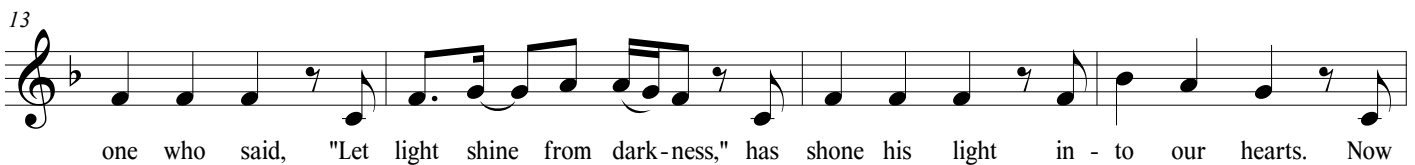
By the

## VERSE 1

Choir Unis.



## PRE-CHORUS



## CHORUS

Parts

21 *f*

We wan-na see — the lost re - deemed, we wan-na see — Your glo - ry — stream.

25

We're long-ing for — Your king-dom, Lord, We wan-na make You known — in all the — earth.

29 **6** *mf* Choir Unis.  
Help us

**VERSE 2**

37  
live ho - ly lives in this dark cul - ture, so we, like stars, may shine. Lord,

41  
fill us — with po - wer and grant us bold - ness to speak the word of life. The

**PRE-CHORUS**

Parts (S &amp; B-melody; A &amp; T-harmony)

45  
one who said, "Let light shine from dark - ness," has shone his light in - to our hearts. Now

49  
we de - di - cate our lives for — this pur - pose: we wan - na see re - vi - val start.

**CHORUS**

Parts

53 *f*

We wan-na see — the lost re - deemed, we wan-na see — Your glo - ry — stream.

57

We're long-ing for — Your king-dom, Lord, We wan-na make You — known —

61 *f* Altos sing melody with Sopranos

We wan-na see — the lost re - deemed, we wan-na see — Your glo - ry — stream.

Basses sing harmony with Tenors

66

We're long-ing for — Your king-dom, Lord, We wan-na make You — known — in all the — earth.

70 W.L. ad lib

we wan-na see — Your glo - ry — stream. We're long-ing for — Your

75

king-dom, Lord, We wan-na make You — known — in all the — earth. —