

Above Every Name

"Therefore God has highly exalted him and bestowed on him the name that is above every name" (Philippians 2:9)

Text based on Phil. 2:5-11,
by James Cheesman & Meg Cheesman
Music by James Cheesman (ASCAP)

♩ = 84 *Tender and expressive*

Piano

measures 1-4

Pno.

measures 5-8

VERSE 1

9

Seat-ed in po - wer, with glo - ry and ho - nor, Poss-ess-ing all ma - je - sty, —

Bb Gm7 Eb2 Cm9

Pno.

p

continue pedaling

measures 9-12

13

Je - sus, the Son, — You came down to the earth — and Gave up Your roy - al - ty. —

Bb Gm7 Eb2 Cm9

Pno.

measures 13-16

17 PRE-CHORUS 1



Though You re-mained one with Your Fa-ther, You be-came hu-man to be one with us.

17 Eb F Gm7 F/A

Pno.

mp



Be-cause You de-scend-ed, Je-sus, You end-ed The en-mi-ty that

21 Eb F Gm7

Pno.

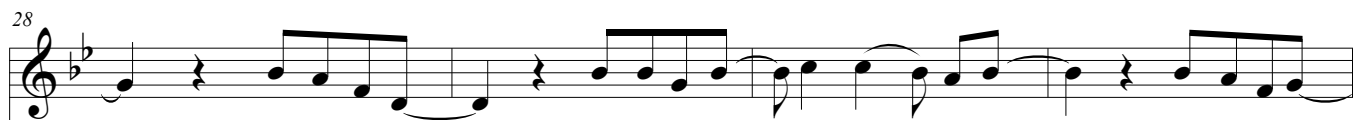


kept Your pre-sence from us. A-bove e-v'ry name, Je-sus You reign,

24 F/A Eb F Bb

Pno.

mp



You are the King, Yours is the vic-to-ry, You came: hum-bly to serve,

28 Gm7 Bb2/D Eb F Bb

Pno.

32

hum-bly to die, Now You are lift - ed high!

Pno.

Gm7 Bb2/D Eb F Bb

f

36

VERSE 2

Je - sus, the ser -

Gm7 Eb Cm9 Bb

Groove with drums & guitar

mf

continue pedaling

40

- vant, no oth - er per - son Has served us so wor - thi - ly.

Pno.

Gm7 Eb2 Cm9

43

You washed our feet and streng - thened our weak hands, And bore our i - ni -

Pno.

Bb Gm7 Eb2

PRE-CHORUS 1

46

- qui - ty. ———— Though You re - mained ———— one with Your Fa - ther, You be - came hu -

46 Cm9 Eb F Gm7

Pno.

50

- man to be one with us. ———— Be - cause You de - scend - ed, Je - sus, You end -

50 F/A Eb F

Pno.

53

- ed The en - mi - ty that ———— kept Your pre - sence from us. ———— A - bove e - v'ry

53 Gm7 F/A Eb F

Pno.

CHORUS 2

57

name, Je - sus You reign, ———— You are the King, ———— Yours is the vic - to - ry, ———— You came:

57 Bb Gm7 Bb2/D Eb2 F

Pno.

61

hum-bly to serve, hum-bly to die, Now You are lift - ed high! E - v'ry knee

61 B \flat Gm7 B \flat 2/D E \flat F

Pno.

65

shall bow down, e - v'ry tongue shall con-fess that Je - sus Christ

65 B \flat Gm7 B \flat 2/D E \flat F

Pno.

69

is the Lord, the God who came. Je - sus, we glo - ri - fy Your name.

69 B \flat Gm7 B \flat 2/D E \flat F

Pno.

73

73 B \flat Cm7 B \flat /D E \flat F

Pno.

77

B \flat Cm7 B \flat /D E \flat F

Pno.

VERSE 3

81 *p*

You were acc - used, then beat-en and bruised and sub-jec-ted to shame and loss. Yet You were o-be-

81 Gm7 F^{sus} E \flat 2 Cm9 Gm7

p

Pno.

PRE-CHORUS 2

86 *Building*

- dient to the point of death, E-ven death on a cross. Though You were bur-

86 F^{sus} E \flat 2 B \flat F/A E \flat

pp

Pno.

90

- ied, the grave could not hold You. Three days la - ter, You rose a - gain.

90 F Gm7 F/A

Pno.

93 *mf*

Then You as - cend - ed to Your throne in Hea - ven, Vic - to - ri - ous Sa -

Pno. *mf*

E \flat F Gm7

96 *f* **CHORUS 2**

- vior, De - feat - er of sin. — A - bove e - v'ry name, Je - sus You reign,

Pno. *f* *Steady, driving* *ff*

F/A E \flat F B \flat

100

— You are the King, — Yours is the vic - to - ry, — You came: — hum - bly to serve,

Pno.

Gm7 B \flat 2/D E \flat F B \flat

104

— hum - bly to die, — Now You are lift - ed high! E - v'ry knee — shall bow down,

Pno.

Gm7 B \flat 2/D E \flat F B \flat

108

e - v'ry tongue shall con-fess that Je - sus Christ is the Lord,

Pno.

Gm7 Bb2/D Eb F Bb

112

the God who came. Je-sus, we glo - ri - fy You name. Je-sus You reign,

Pno.

Gm7 Bb2/D Eb *rit.* F Bb *a tempo*

p

Optional Ending Optional Chorus

116

You are the King, Yours is the vic - to - ry, You came:

Pno.

Gm7 Bb2/D Eb F

119

hum-bly to serve, hum-bly to die, Now You are lift - ed high!

Pno.

Bb Gm7 Bb2/D Eb F Bb